

# get involved

**Pray** regularly for our outreach.

**Give . . .**

- ◆ Sponsor a student in our Christian schools or Bible clubs.
- ◆ Support a World Impact missionary.
- ◆ Send an inner-city child to camp.
- ◆ Invest in job training.
- ◆ Bring clothing, household goods or food to help meet physical needs.

**Come.** Join us as a . . .

- ◆ Church planter
- ◆ Youth worker
- ◆ Bible teacher
- ◆ Camp counselor
- ◆ Nurse
- ◆ School teacher
- ◆ School administrator
- ◆ Accountant
- ◆ Physician or dentist
- ◆ Carpenter, mechanic

**Learn More**

Read a World Impact book: **Out of Ashes, No Quick Fix, The Making of a Disciple** ◆ Watch a video: **Crowns of Beauty, Hope for the Inner City, World Impact Schools** ◆ If you are interested in becoming a missionary, attend **Weekend Exposure** or our **Operation Nineveh Conference** for college students ◆ Visit our website.

**Share with others**

Invite a World Impact missionary to speak in your church or include World Impact in your church's missions' budget.

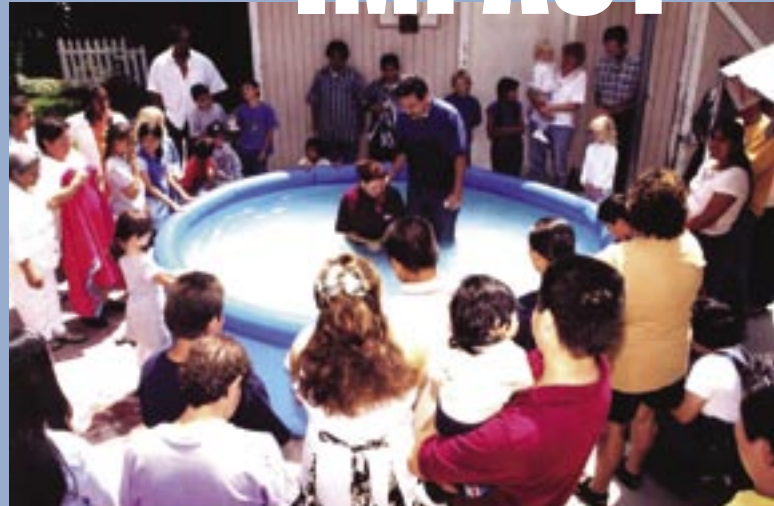
Please contact us for more information.

DR. KEITH PHILLIPS, President  
 2001 S. Vermont Avenue • Los Angeles, CA 90007  
 323.735.1137 • 323.735.2576 FAX • info@worldimpact.org

[www.worldimpact.org](http://www.worldimpact.org)

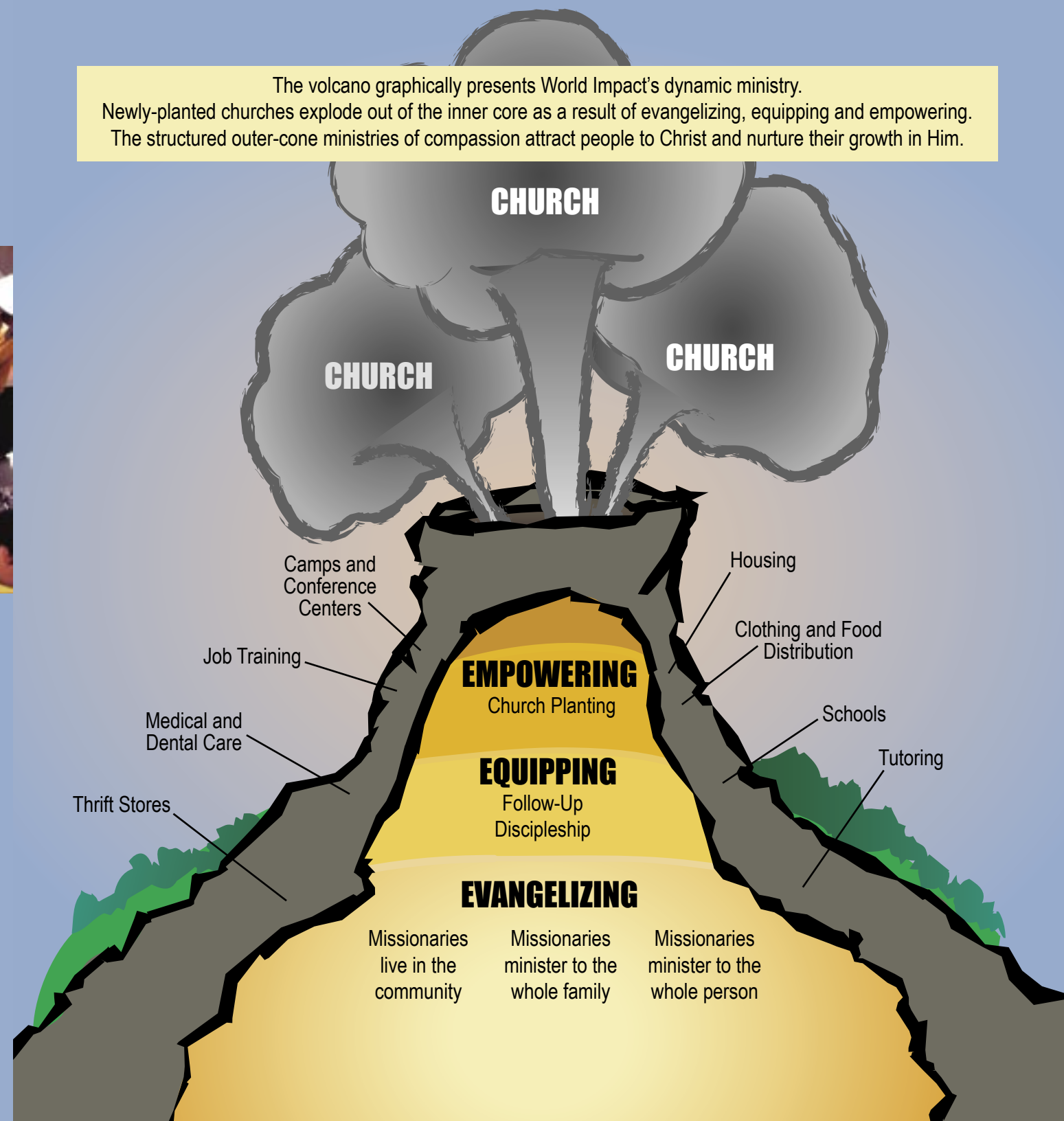


# WORLD IMPACT



empowering  
 the urban poor  
 through  
**church planting**

The volcano graphically presents World Impact's dynamic ministry. Newly-planted churches explode out of the inner core as a result of evangelizing, equipping and empowering. The structured outer-cone ministries of compassion attract people to Christ and nurture their growth in Him.



# evangelizing



*World Impact missionaries live in the communities where they serve. They creatively share the gospel through thrift stores, tutoring and neighborhood Bible clubs.*



# equipping

*Compassion-based community ministries, like Christian schools and a medical/dental clinic, help equip the urban poor and provide nurture for maturing believers.*



# empowering



*Job training, and our camps and conference centers, provide training in life-skills to strengthen relationships and nurture families.*

# church planting



*World Impact's School for Urban Cross-Cultural Church Planting trains missionaries, inner-city lay people and clergy to plant churches. The Urban Ministry Institute and our Urban Discipleship Centers equip inner-city Christians to be pastors and lay leaders.*

